

# ILLUMINANCE SENSOR

## RY-G/TW (OUTDOOR)

### MANUAL



#### INTRODUCTION

RY-GTW illuminance sensor is specially developed for outdoor application environment. It is made of cast iron and imported photosensitive element. It can output linear analog signal with stable performance. It is widely used in intelligent greenhouse, building automation, street lamp control and other environments where outdoor light intensity needs to be detected.

#### TECHNICAL SPECIFICATION




- Supply voltage: DC12-24V
- Output: 4-20mA
- Range: 0-200Klux (Non scalar range can be calibrated)
- Accuracy:  $\pm 3\%$
- Work environment:  $-30^{\circ}\text{C}$ - $80^{\circ}\text{C}$

## FEATURES

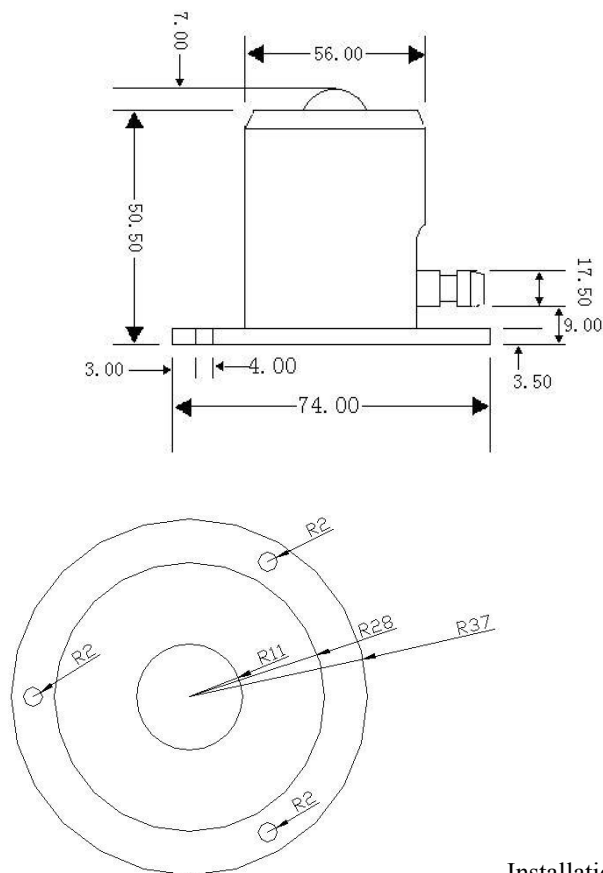
- High Accuracy, wide range, high resistance of input line, good stability
- Cast iron material, good waterproof performance
- Long transmission distance and strong anti-interference ability
- Signal output with current limit ( $< 30\text{mA}$ ), and good linearity

## WIRING METHOD

3-line output

Red		DC12V
Black		Negative pole
Yellow		Signal output

### Overall and Installation Dimensions:



Installation method: flange installation